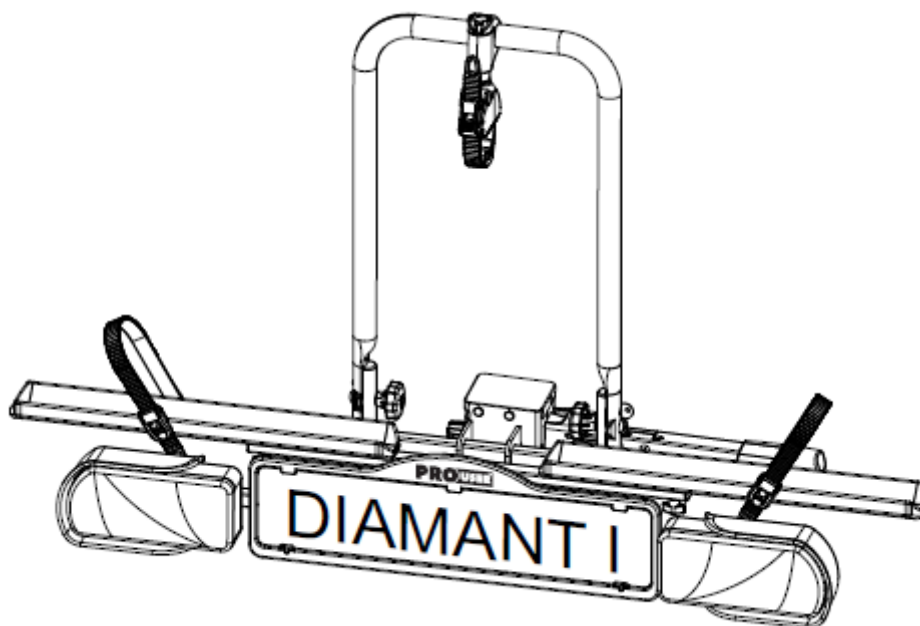


**NL: Montagehandleiding en Veiligheidsvoorschriften**  
**DE: Montageanleitung und Sicherheitsvorschriften**  
**UK: Assembly instruction and safety regulations**  
**FR: Notice d'assemblage et de sécurité**

**Fietsdrager/Fahrradträger/Bike carrier/Porte-vélo**

## **DIAMANT I**



<ul style="list-style-type: none"> <li>• Maximale kogeldruk</li> <li>• Max. Stützlast</li> <li>• Anhängerkupplung</li> <li>• Max. ball pressure</li> <li>• Force de traction maximale de l'attache remorque</li> </ul>	<ul style="list-style-type: none"> <li>• Gewicht fietsdrager</li> <li>• Eigengewicht</li> <li>• Fahrradträger</li> <li>• Weight bike carrier</li> <li>• Le poids du porte-vélo</li> </ul>	<ul style="list-style-type: none"> <li>• Max. belasting</li> <li>• Max. nutzlast am</li> <li>• Fahrradträger</li> <li>• Max. load</li> <li>• Charge maximum</li> </ul>
50kg	9,5kg	<b>Max. 30kg</b>
60kg	9,5kg	<b>Max. 30kg</b>
75kg	9,5kg	<b>Max. 30kg</b>
90kg	9,5kg	<b>Max. 30kg</b>

**PROUSER** BIKE CARRIERS®

*Europese typegoedkeur/Europäische Zulassung/European permission/Certification Européenne*  
**E4-26R-03 0281**

## **INTRODUCTION**

The Pro-User DIAMANT I bike carrier is part of the family of bike carriers manufactured by Tradekar Benelux BV

- ✓ Hitch ball bike carrier
- ✓ Suitable for almost all types of hitch balls, bikes and wheel dimensions
- ✓ Safe and reliable bike carrier for the transport of 1 bicycle
- ✓ Extremely simple and quick fitting on the tow-ball via the quick connector
- ✓ Bikes are held in wide, stable aluminium wheel holders
- ✓ Fixing of the bicycles on the frame, so no force on the pedals of your bike
- ✓ Flexible bike holding arms
- ✓ Lighting via a 7 and 13 pin (Jaeger) plug
- ✓ Including fog light and reverse driving lighting (only working via the 13-pin plug)
- ✓ The carrier and frame holder can be locked
- ✓ Almost no influence on the driving behaviour of your car
- ✓ European permission given by the RDW



**Read the following safety- and operating instructions carefully and act accordingly before using the bike carrier.**

## **IMPORTANT INFORMATION**

Read these instructions carefully before using the product for the first time!

Do not use this product until the manual and safety regulations are read and are entirely clear.

The assembly and installation of the bike carrier can only be done according this instruction manual.

The steps that are mentioned and the safety regulations for assembly, handling and use of the bike carrier need to be followed! The slightest non conformity can lead to incorrect assembly or wrong use.

The carrier is suitable for the transport of one bike at most. Please check the maximum permissible ball load. You can find it on the identification plate of the hitch ball of your car (for most cars this is 75kg). The total weight of the carrier with the bike cannot exceed the maximum permissible ball load of the hitch ball.

The maximum permissible load for the carrier itself may be **30kg**.  
The net weight of the carrier is around **9,5kg**.

<b>Max. permissible Ball load</b>	<b>Weight bike carrier</b>	<b>Max. load</b>
50kg	9,5kg	<b>Max. 30kg</b>
60kg	9,5kg	<b>Max. 30kg</b>
75kg	9,5kg	<b>Max. 30kg</b>
90kg	9,5kg	<b>Max. 30kg</b>

Not suitable for the use on an aluminium hitch ball.

Keep these assembly instruction and safety regulations in your car.

### **CONSUMER HELPDESK & SUPPORT**

 +31 (0)345-470998 (Monday till Friday 8:30-12:30)

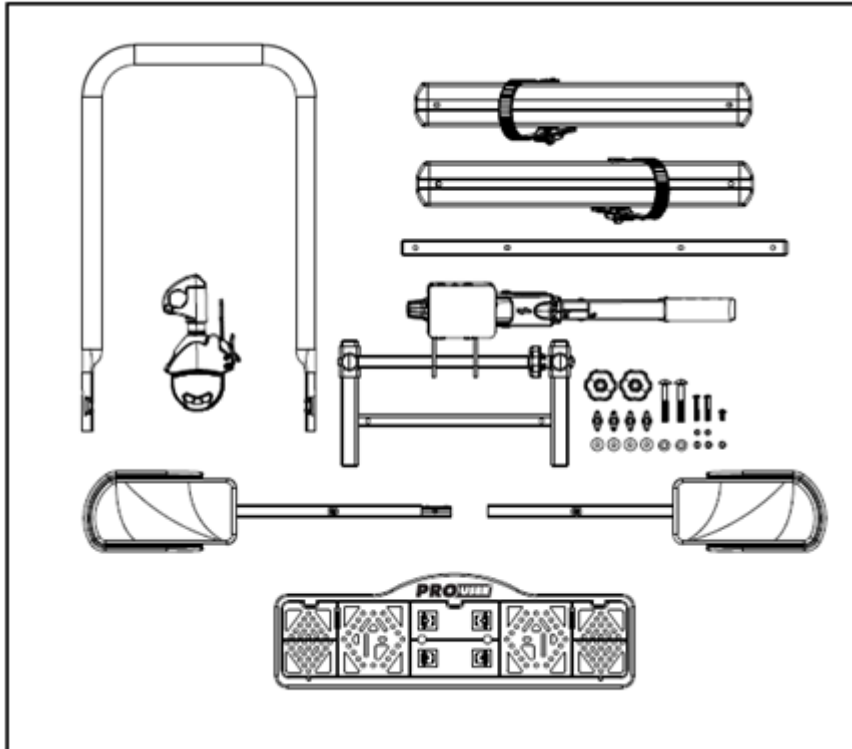


[service@tradekar.com](mailto:service@tradekar.com)

## **MOUNTING THE BIKE CARRIER**

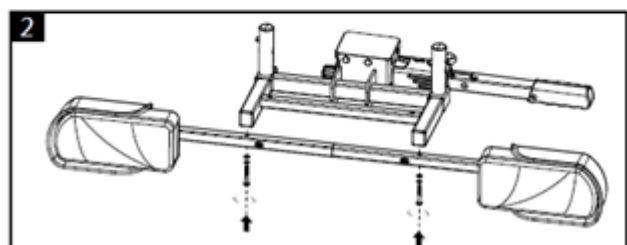
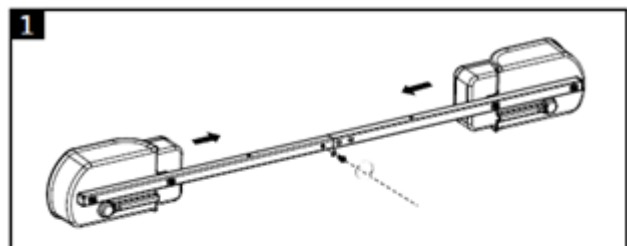
The bike carrier comes unassembled. Remove all parts from packaging and arrange them in a well-organized way. The instructions will clearly describe and show the parts that you need for each step and how to assemble the bike carrier.

### **Parts:**

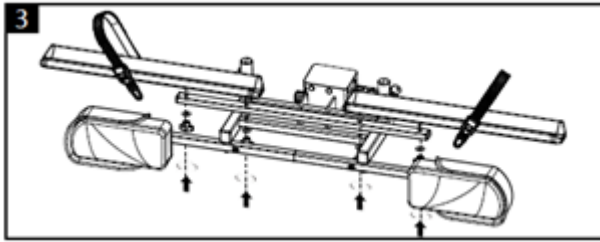


Mount the two lamp holders together. This is done by means of a small piece of iron connection that is already pre-mounted on one side. Slide the rails "together" and fix it by the supplied screw (M5x12) and washers.

Mount the lamp holder rail at the bottom of the base frame with the two M5x35 bolts and washers.



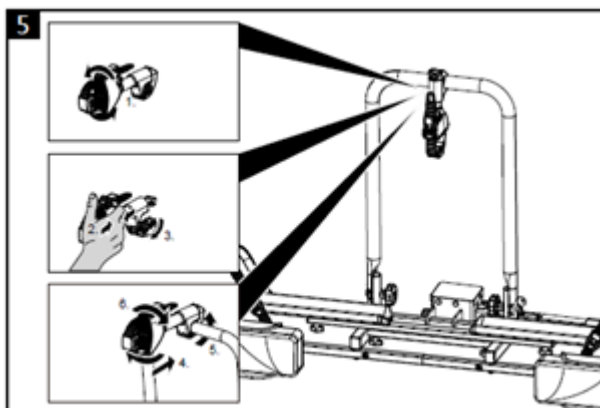
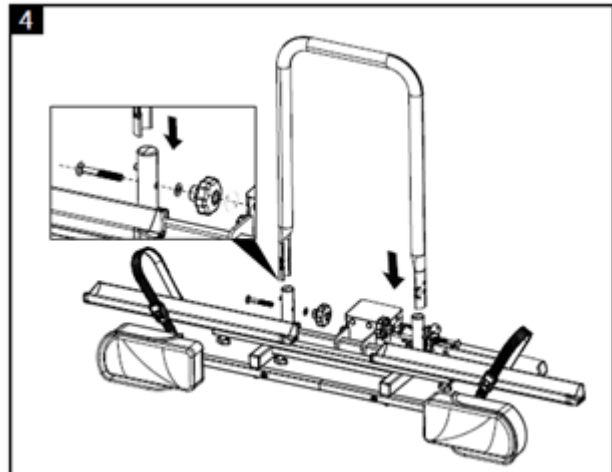
**Make sure that the rear fog lamp is mounted on the left side of the bike carrier!**



M6x30, washers M6 and M6 wingnuts.

Slide the U-frame against the outside of the U-frame holders of the base frame. Secure this U-frame with the supplied carriage bolts (M8x60), washers and plastic rotary knobs. Make sure the plastic rotary knobs are on the inside (see picture).

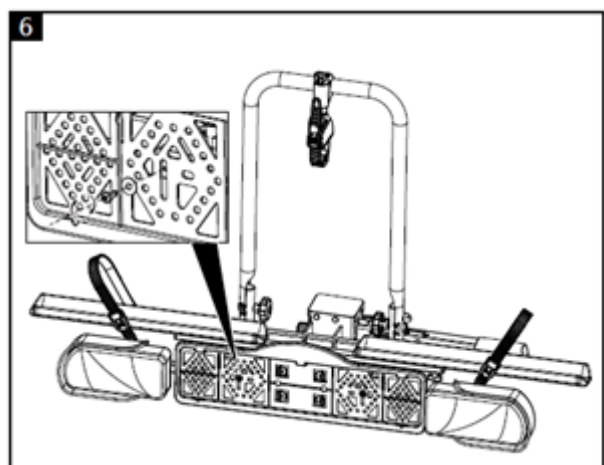
**Please note:** firmly tighten both rotary knobs so that the U-frame will come on its place well.



Unscrew the plastic rotary head of the frame holder, so the clamp can be folded open. Put the clamp around the U-frame, subsequently re-attach the holder and screw the plastic rotary head until you can just turn the frame holder (the frame of the bike has to be attached to it, so it has to be movable). The side with the strap is intended to fasten the bike.

Loosen and remove the little screws intended for the mounting of the number plate holder from the light holder rail and fasten the number plate holder to the rail. The number plate holder has to be level with (or just above) the lighting.

With the cable ties supplied with the carrier, the light cable can be fastened neatly at the bottom of the carrier.



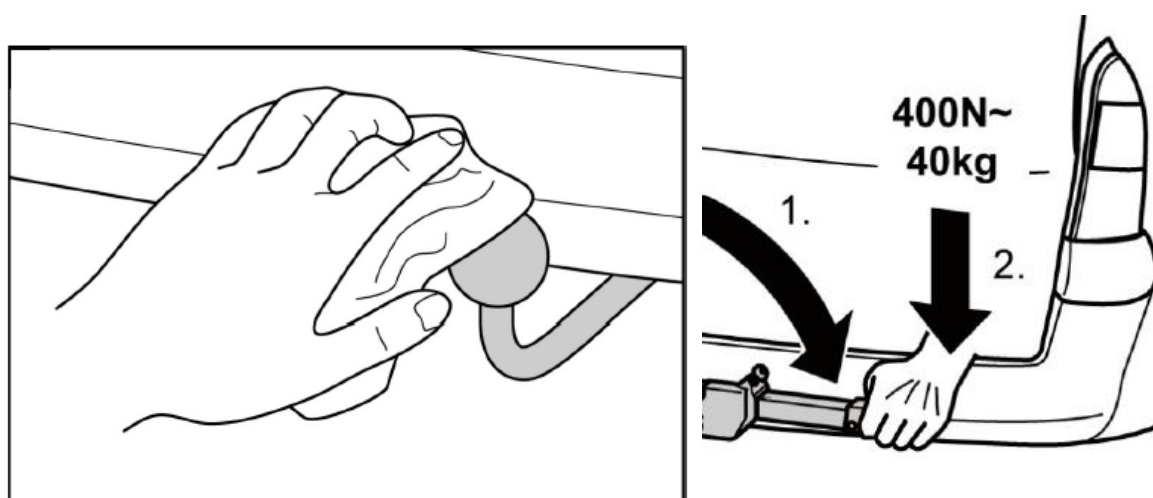
## **MOUNTING OF THE BIKE CARRIER ONTO THE HITCH BALL**

The first step is to become familiar with the quick connector.

When mounting the bike carrier to the car, it is best that the car is parked straight, the engine is turned off and the parking brake is activated. Make sure that the tow ball is undamaged, clean and not greasy!

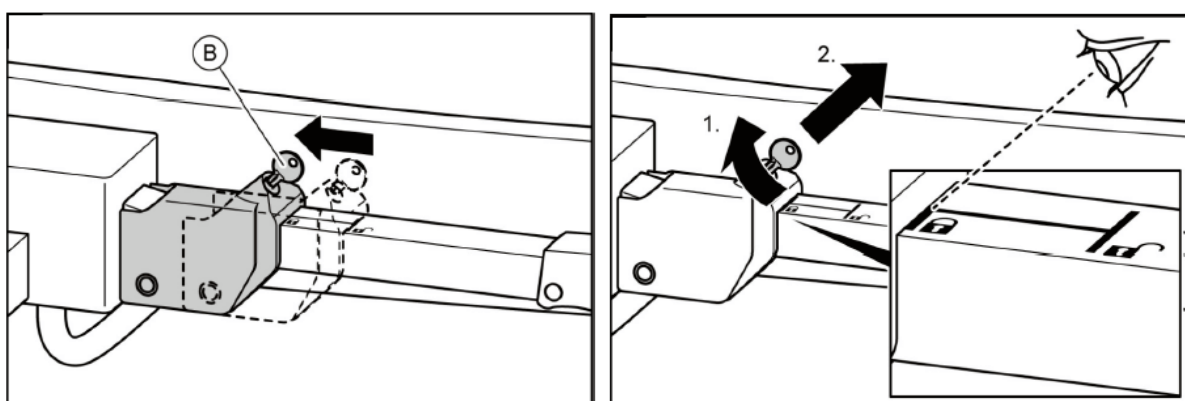
A faulty or defective connection between the bicycle carrier and trailer coupling can lead to the detachment of the bicycle carrier. Damage of the carrier, e.g. by bent parts, cracks or scratches, prevent the safe operation of the carrier.

- Replace the trailer coupling if it is damaged.
- Clean the trailer coupling of dirt, dust and grease.
- Do not fit the bicycle carrier if it is damaged in any way.
- Proceed as described in the chapter "Maintenance".

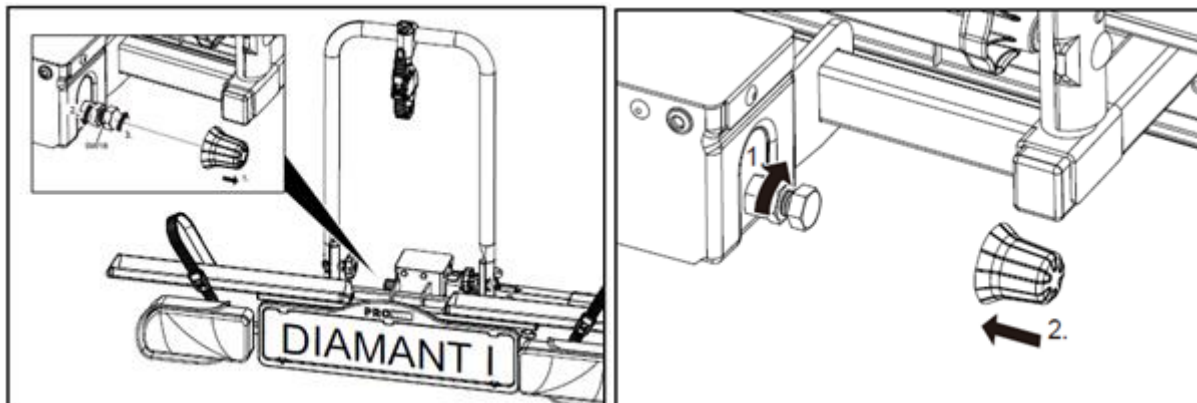


The quick connector consists of a case mounted to the bike carrier and a lever. Using the lever, you can close and open the quick connector.

Release the locking/safety slide. Release the quick connector by moving the handle in the vertical position. Position the bike carrier on the tow ball from the top. Press the handle of the quick connector downwards (approx. 40kg) until it stops (handle will stay stable in the horizontal position). Slide the locking/safety slide back and secure by locking (the handle can no longer be pulled up). Check for the green indicator.



Now test if the carrier is attached steady enough on the tow ball (and not easy to twist). If not, you have to adjust the quick connector. If it is not tight enough, take the carrier off again and screw in the adjustment screw of the quick connector a little bit further. Loosen locking nut first, screw in adjustment screw and tighten locking nut again.



Check again if the carrier is properly secured to the tow ball (and cannot rotate easily). Repeat this until the carrier is properly secured.

**Caution: Always make sure that the locking nut of the adjustment bolt is tightened again!**

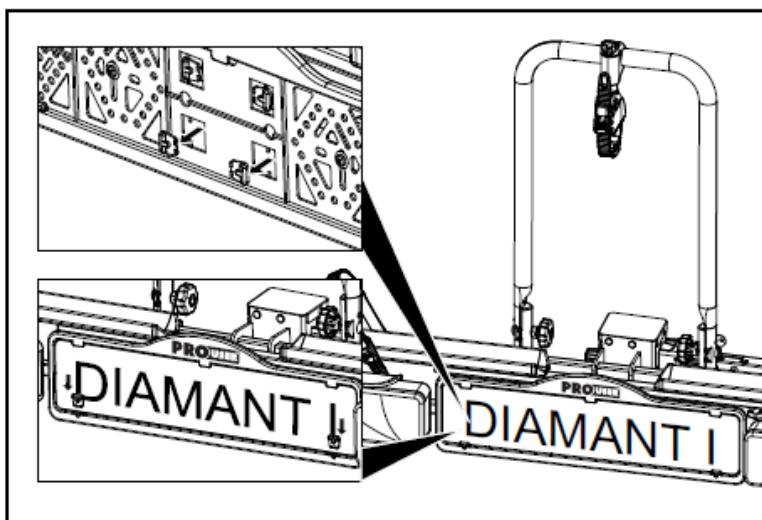
When the bike carrier is not easy to turn anymore, the quick connector can be locked. Lock the quick connector with the locking/safety slide and lock and take the key out. Keep the key carefully on a safe place. The bike carrier is now also protected against theft.



**Always check if the quick connector is well secured with the locking/safety slide and is locked. The carrier may *never* be used if it is not secured and locked.**

## **THE LICENSEPLATEHOLDER**

The clips (2) to mount the license plate can be pressed out and are in the license plate holder (see image).





## LIGHTING

This bike carrier is equipped with a lighting system. This system can be connected to the hitch ball power socket of your car. Seeing that there are different kinds of sockets that require different kinds of plugs, this carrier comes with the usual 7-pin plug and the 13-pin plug (Jaeger). As a result, the carrier can be used with any hitch ball!



Both plugs are in one housing. Please cover the plug you don't use with the supplied cover.

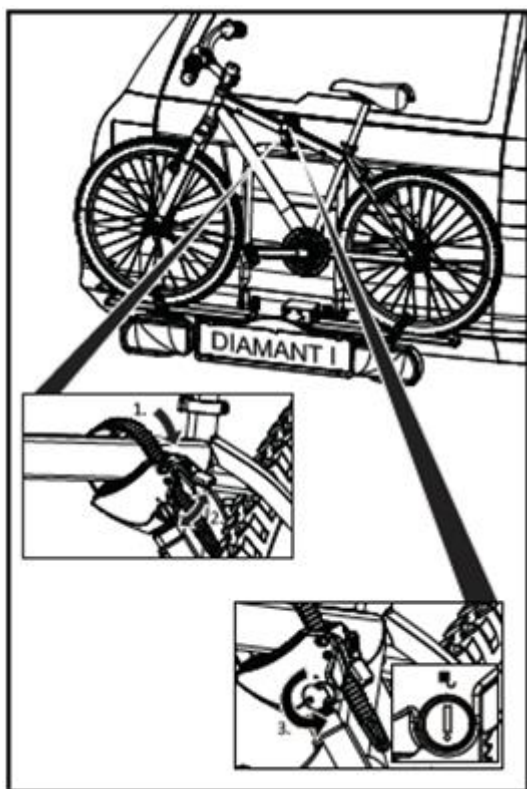
<b>Universal system 7 pin</b> 	1/L 2/54G 3/31 4/R 5/58R 6/54 7/58L	Indicator left Rear fog light Ground Indicator right Rear light right Stop lights Rear light left  <i><b><u>The reversing light is not working via the 7-pin plug!</u></b></i>	yellow blue white green brown red black
<b>Jaeger system 13 pin</b> (DIN 72.570) 	1 2 3 4 5 6 7 8 9 10 11 12 13	Indicator left Rear fog light Ground Indicator right Rear light right Stop lights Rear light left Reversing light <i>Not used</i> <i>Not used</i> <i>Not used</i> Ground <i>Not used</i>	yellow blue white green brown red black gray



## **MOUNTING OF THE BIKE ON THE BIKE CARRIER**



**Remove all parts from the bike that could easily be lost (E-bike batteries, bike pumps, speedometers, baskets, panniers, bicycle seats etc.) during transport. These parts may become loose by the increased air resistance and vibration and put other road users at risk.**

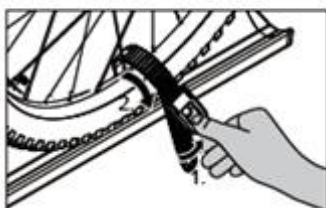


The bike (max. 30kg) has to be placed in the wheel holder and secured with the short frame holder on the U-tube.

The frame holder is flexible to place on the U-tube, and are also flexible to place on your bike. Try the first time which position in your situation works best (and most stable affirmative is). It is important to place the frame holder as high as possible, giving maximum stability.

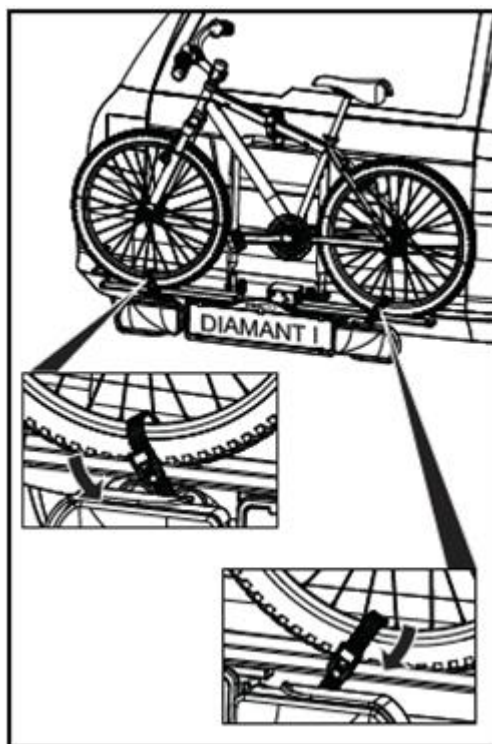
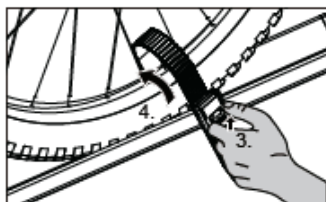
Use the strap to secure the bike. With this strap, any bike can be secured easily without placing a load on the bike crank.

pump function



Secure the wheels using the integrated straps. The loose strap can be used to fix the front wheel extra stable.

release function



**Now secure the bikes using the long safety belt.**

Run the safety belt through the bike frame and around the U frame and tighten firmly.

## **SAFETY REGULATIONS**

Keep the tow ball clean and free of grease.

Each time after having mounted the carrier on the tow ball, it will "settle" during the first kilometres that you drive. Therefore, check if the carrier is still firmly secured after the first few kilometres and if necessary, tighten the locking bolt.

Check the bike carrier before use if there is any damage. Damaged or worn parts need to be replaced immediately. Only use original replacement parts.

Do not make any modifications on the bike carrier (mechanical or electronic) This can be very dangerous. Warranty claims will not be accepted and we cannot guarantee the correct functionality of the bike carrier, if you done modifications. We are not responsible for damage caused as result of incorrect assembly, installation or modification.

Check the correct operation of the lighting at regularly.

Always make sure that the bike is firmly fixed by using the frame holder and wheel safety belts.

Always use the extra safety belt, for extra protection of your bikes. Run the safety belt trough the U-frame and the frames of the bikes, and pull this firmly.

Make sure that no parts of the bike can get lost during driving (pump, basket, saddlebags, etc.). **Always remove these before driving!**

Check regularly if all the belts, knobs and fixations are firmly secured and if necessary secure them again.

Always make sure that the quick connector is closed and locked.

Do not cover the bikes with a cover while driving.

Driving with a bike carrier affects the performance of your car. Adjust your speed accordingly (**max. 130km/h**). Try to avoid sudden braking and steering movements.

Please remember when driving in reverse that the car is longer than usual!

In addition, pay attention to the regulatory requirements applicable to the transport of goods at the back of your vehicle.

When you have a vehicle with electronic parking sensors, an error message can come when the bike carrier is mounted. Switch off the parking system during the use of the bike carrier.

If the car is equipped with an automatic opening of the trunk, this must be switched off or only opened manually, if the bike carrier is mounted.

Take the bike carrier of the tow ball before using the carwash.

The bike carrier is not suitable for "off road" use.

Take the bike carrier of the tow ball if not used.

In case of defects or problems please contact your Pro-User supplier.

## **MAINTENANCE**

Always store the bike carrier clean and dry after use. If necessary spray with the water hose to remove mud and other filthy stuff.

Keep the tow ball of the car clean and free of grease.

Keep the quick connector of the bike carrier clean and free of grease.

Check the bike carrier regular if there is any damage. Damaged or worn parts need to be replaced immediately. Use only original replacement parts.

The nuts and bolts of the bike carrier need to be checked regular, if necessary tighten them again.

If there is a damage on the powder coating of the bike carrier this need to be treat with paint immediately.

Rotating and moving parts need to be oiled regularly.

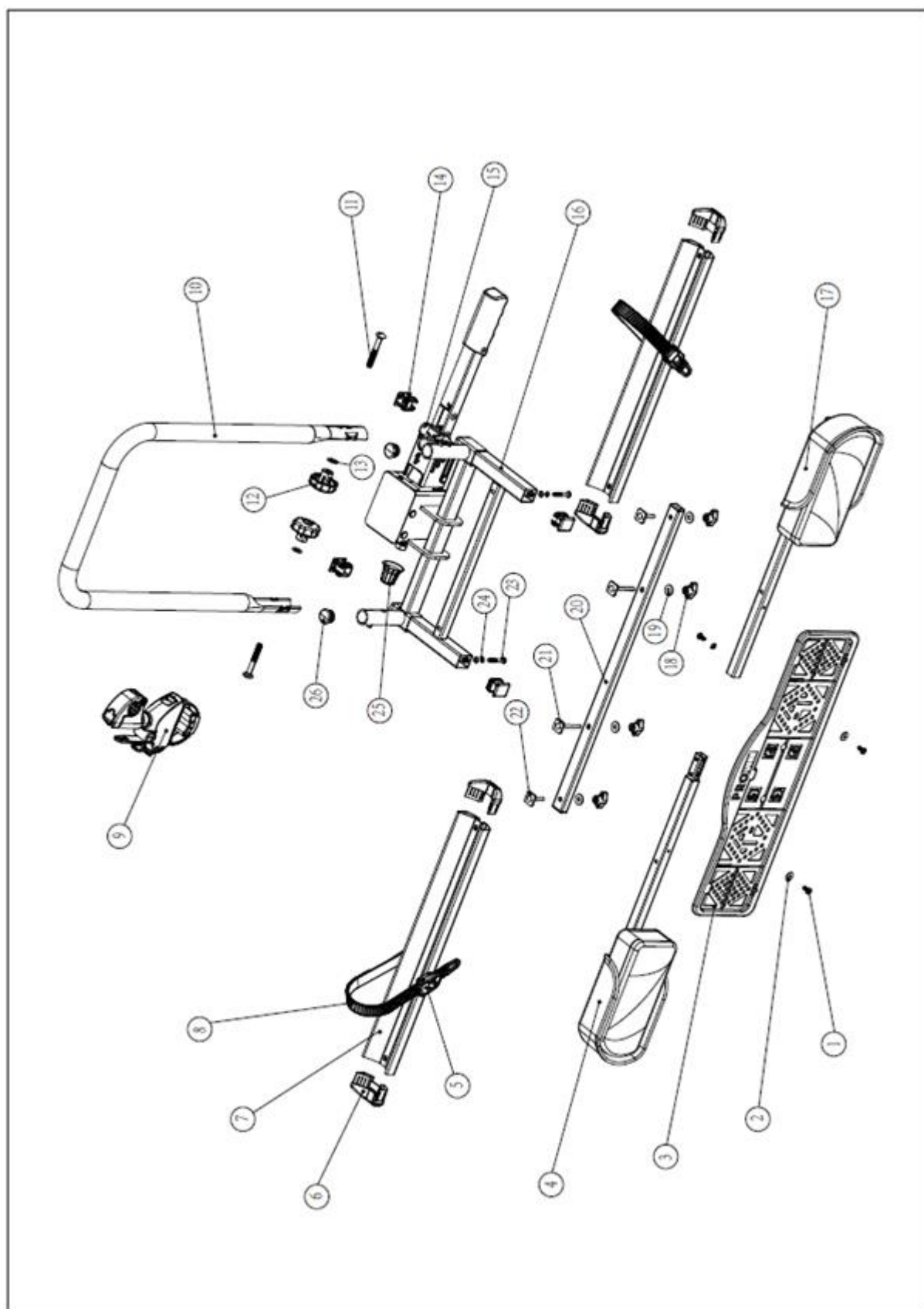
## **GUARANTEE**

This product is covered by a 2 year guarantee. Please note that our guarantee covers reasonable use of the bike carrier, it does NOT cover any damage caused by misuse. This also applies to a malfunction or failure of the bike carrier that has been caused by poor or incorrect installation. To ensure the validity of the guarantee please carry out maintenance in accordance with the maintenance section. We reserve the right to make a call out and/or repair charge for any work required to be undertaken to rectify faults that are outside of the company's control i.e. incorrect or poor fitting, misuse, accidental damage, etc.

**PARTS LIST**

<b>Pos nr.</b>	<b>Description</b>	<b>QTY</b>	<b>Remark</b>
1	Screw	3	M5x12
2	Washer	3	M5
3	License plate holder	1	
4	Lamp left	1	
5	Buckle for strap	2	
6	Plastic end-cap for wheel holder	4	
7	Wheel holder	2	
8	Strap	2	
9	Short frame holder	1	
10	U-tube	1	
11	Carriage bolt	2	M8x60
12	Plastic knob	2	M8
13	Washer	2	M8
14	Plastic end-cap	4	30x25
15	Key for quick connector	2	
16	Main frame with quick connector	1	
17	Lamp right	1	
18	Wingnut	4	M6
19	Washer	4	M6
20	Wheel holder tube	1	
21	T-bolt	2	M6x50
22	T-bolt	2	M6x30
23	Cross head bolt	2	M5x35
24	Spring washer	2	M5
25	Plastic protection cover	1	
26	Plastic end-cap	2	Ø26

## **EXPLODED VIEW**



© Tradekar 91756/21A

**PRO** BIKE CARRIERS® **USER**

**Tradekar Benelux BV**

Ohmweg 1  
4104 BM CULEMBORG  
The Netherlands

+31 (0)345-470990  
info@tradekar.com  
www.pro-user.eu

